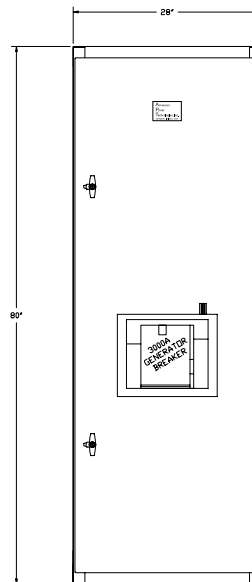
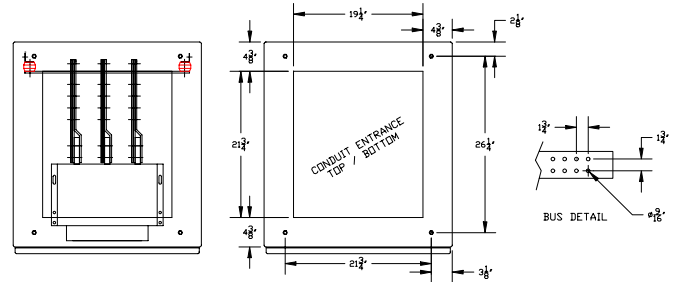


## Featured Product:

# Low Voltage Circuit Breaker Panel

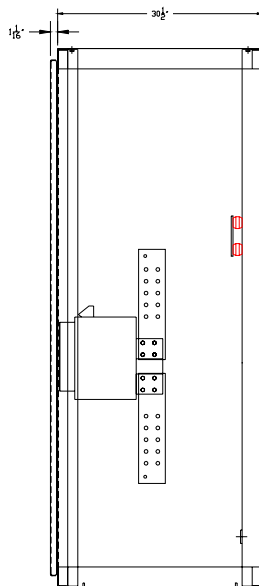


- For use as generator or service main, or to feed MCCs, switchboards and large equipment loads.
- Insulated case, 100% rated fixed mounted circuit breaker with LI trip unit, shunt trip, auxiliary contacts and bell alarm provided as standard.
- Large bus bar connections simplify field cable installation.
- Provides robust 100% rated disconnecting means, with short circuit and overload protection.
- Enclosure includes hinged front door with lockable T-handles.
- Optional features include: electric operator, draw out circuit breaker, circuit breaker control switch, circuit breaker position indicating lamps, electric metering, emergency stop pushbutton, generator protection, fault annunciation, automatic source transfer control, generator paralleling control, main bus, Modbus serial or Ethernet communications and more.

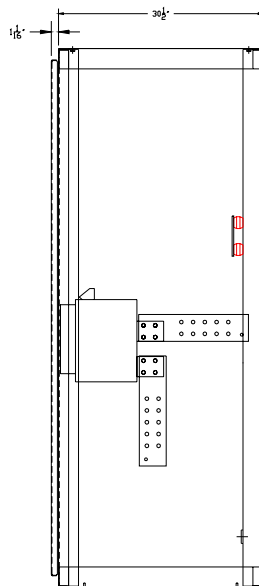
**Specifications**

Voltage:	208 – 690V, 3 phase, 3 or 4 wire
Current:	Up to 4000A
Enclosure:	NEMA 1 for indoor use NEMA 3R for outdoor use (optional)
Dimensions:	Up to 3000A – 28"W x 80"H x 23" or 32" or 46" or 54" or 62"D Up to 4000A -- 36"W x 80"H x 46" or 54" or 62"D
Metering options:	True RMS, 3 element, bi-directional, 4 quadrant: PS-V – voltage and frequency sensing
Metering accuracy:	0.3% - voltage and current 0.6% - power and energy
Metering options:	PS-P – power sensing (A, V, Hz, kW, PF, kVAR, etc.) PS-E – energy sensing (kWh, kVARh)

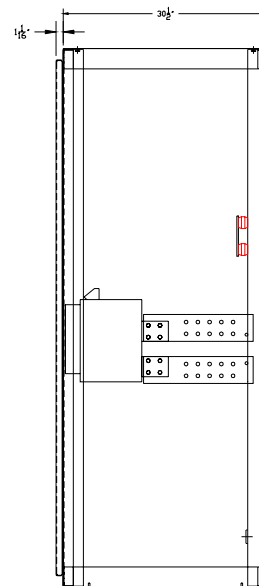
**Bus Configurations**



Vertical/Vertical



Horizontal/Vertical



Horizontal/Horizontal